

Connecting Fermi-surface topology and spin-orbit torques in Weyl Semimetal/Ferromagnet Heterostructures

Amilcar Bedoya-Pinto^{1,2}

A.K. Pandeya², D. Liu² and S.S.P. Parkin²

¹Institute of Molecular Science (ICMol), University of Valencia, Spain

²NISE-Department, Max-Planck Institute of Microstructure Physics, Halle, Germany

Amilcar.Bedoya@uv.es

Weyl Semimetals (WSMs), materials with three-dimensional topologically protected electronic states, show highly interesting physical properties including surface Fermi-arcs, the chiral magneto-transport anomaly and extremely high electron mobilities. One promising application field of WSMs is spin-orbitronics, as the Fermi-surface is expected to play an important role in the spin-to-charge conversion efficiency, according to theoretical investigations [1,2].

In this work, we report the growth of epitaxial, single-crystalline NbP and TaP Weyl Semimetal thin films [3] by means of molecular beam epitaxy, and their successful integration in spin-torque devices. We have assessed the structural quality of the films (Fig.1a) featuring an atomically flat, ordered surface, essential for the observation of topological bands by photoemission (Fig. 1b). Furthermore, we rely on the preparation of high-quality in-situ TaP/Permalloy interfaces to investigate the spin-orbit torques produced by the topological WSM by means of spin-torque ferromagnetic resonance (ST-FMR). First results of TaP/Py/MgO device structures show readily signatures of large spin-orbit torques induced by the Weyl Semimetal: (i) a very strong symmetric component of the voltage lineshape across the resonance related to damping-like torques (Fig.1c), much different than the FMR response of a reference ferromagnet, and (ii) a clear scaling of the resonance linewidth by applying an external DC bias through the bilayer (Fig. 1d). **The connection between Fermi-surface topology and spin-to-charge conversion** is addressed by performing angle-resolved photoemission measurements on the TaP thin film surfaces prior to the *in-situ deposition* of the magnetic layers, and probing the spin-torque efficiency along the high-symmetry directions of the WSM, where the surface states are expected to have a substantial contribution.

References

- [1] Sun, Y. et.al. Strong Intrinsic Spin Hall Effect in the TaAs Family of Weyl Semimetals. Phys. Rev. Lett. 117, 146403 (2016)
- [2] Johansson, A. et.al. Edelstein effect in Weyl semimetals. Phys. Rev. B 97, 085417 (2018)
- [3] Bedoya-Pinto, A. et.al. Realization of NbP and TaP Weyl Semimetal Thin Films, ACS Nano, 14, 4, 4405 (2020)

Figures

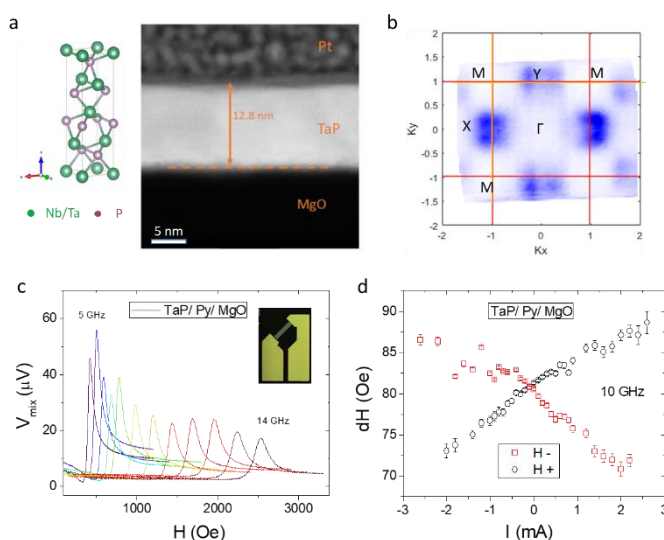


Figure 1: (a) Transmission electron microscopy image of a TaP thin film, showing ordered epitaxial lattice planes and an atomically flat surface. The crystal structure is drawn for clarity. (b) Angle-resolved photoemission measurements of the TaP thin films, showing four-fold symmetric electronic pockets at the Fermi-energy. (c) Frequency-dependent ST-FMR of a TaP/Py/MgO device, evidencing a strong symmetric lineshape component indicative of damping-like spin-orbit torques. Inset: Optical image of ST-FMR device. (d) Linewidth dependence of the ST-FMR signal, showing a consistent scaling with applied DC bias. The slope is proportional to the magnitude of the induced spin-orbit torques per charge unit.